

Why Vaillant?

Because we like to save energy without losing comfort.



■ electronicVED

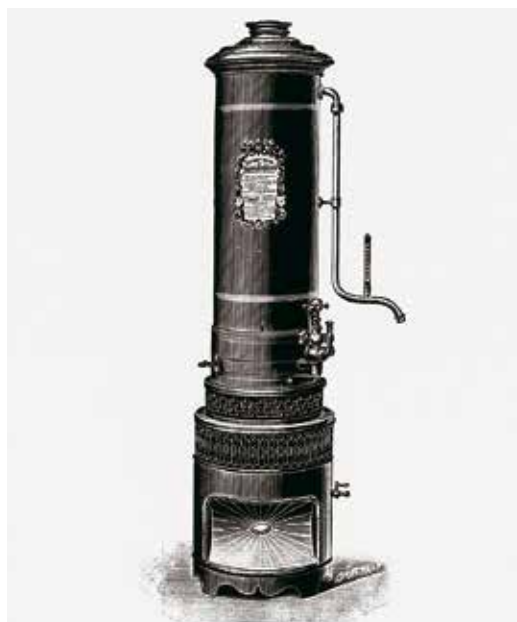
■ hydraulic VED

■ hydraulic miniVED

Because  **Vaillant** thinks ahead.

Why electrical appliances from Vaillant?

Because we want that our customers enjoy the comfort they are used from us.



Comfortable technology in the field of electric hot water supply.

Innovation is Vaillant. Vaillant is innovation. Ideas for heating supplied by the leader in innovation is synonymous of trend-setting system technology in the field of residential heating, domestic hot water and home conveniences.

Today, with the know-how and competence acquired in more than 135 years in Innovation for heating, Vaillant offers a vast range of electric hot water appliances fully matching individual domestic hot water demand as to modern conveniences of our customers. Vaillant does not only deliver exactly the desired quantity of hot water right to the degree at any time, but as well simultaneously supplies it at several tapping points within the split of a second.

Fast, proper, economical : decentral warm water supply

In many cases the decentral electric hot water supply is an attracting and interesting alternative solution. Water is being heated at exactly the time and the place where it is needed and in exactly the quantity which is needed. Long pipework is not only a synonym of high heat losses but as well of unnecessary consumption of precious potable water. Positioning the water heater very close to the tapping points pipework and energy losses are reduced to a minimum. The benefit is for our environment but also for your household budget.

Mode	Appliance	Allocation of the appliances to their areas of application	1. individual supply	2. group supply
Electronic	electronicVED exclusiv electronicVED plus electronicVED	- electronic for extraordinary conveniences in hot water supply, e. g. washbasins, showers, bath tub	●	●
Hydraulic	VED	- hydraulic e. g. washbasin, showers, bath tub	●	●
	miniVED	- hydraulic e. g. washbasin	●	

● recommended application ● possible in case of alternating water tapping

Two different systems of hot water supply:

1. individual supply: one appliance supplies hot water to only one tap point, e. g. sink or washbasin

2. group supply: one appliance supplies hot water to several but not to all existing tap points, e. g. shower, bath tub and washbasin



Innovative technique for individual comfort -

leave it all to electronicVED exclusiv

Fully electronic for warm water „made to measure“

The new fully electronic Vaillant instant water heater electronic VED exclusiv in its flat, elegant design fits into every kitchen or each bath room. Its innovative technique cares for energy and water savings, while supplying warm water at the exactly desired temperature - up to the degree centigrade.

It shows up what it can: via energyMONITOR

You surely want to know how much electricity and water your device consumes. With the electronicVED exclusiv a glance on the display is sufficient: it is the world-wide first electric water heater with integrated consumption data indication.

Not being an exact measurement device slight tolerances have to be considered - but this is anyway a precious trend indicator which enables you to estimate your yearly consumption.

Likes working in a team: with renewable energies

It can for example also be used as back-up heating for your solar system. Also here it will just consume the absolute needed energy to achieve the desired water temperature and nothing else. This is by the way possible up to an inlet temperature of 60°C.

Speaks a plain language: for ease of handling

The big illuminated display with plain text menu makes the handling of the electronicVED exclusiv very easy. For cost optimised warm water supply the energy safety function can be chosen with a button. Temperature and device adjustment, scalding protection and child-proof lock can easily be adjusted and found on the display.

Productfeatures electronicVED exclusiv at one sight:

- Output models 18, 21, 24 and 27 kW
- EnergyMONITOR with consumption indication
- Exact adjustment of desired water temperature
- Exact adjustment of scalding protection
- Big illuminated graphical display with plain text menu
- Electronic power adjustment
- Exact temperature adjustment from 20 up to 60°C
- Flat design: 481 x 240 x 99 mm (height / width / depth)
- Easy to service thanks to System Pro I
- Adaptable to solarsystem (except VED E 27/7 E) for pre-heated water up to 60°C
- Please kindly see technical details on page 8



Constantly the desired temperature without any effort:

electronicVED plus



Having always an eye on the energy consumption

Adjustment of the desired temperature up to the exact degree centigrade, comfortable handling over a big, illuminated graphical display and the unique energy monitor for your observation of the consumption - all packed into an appealing design. That is how the new electronicVED plus brings broad warm water comfort to your house or flat.

Easily adjusted: with plain text menu

Via the big, illuminated graphic display with user-oriented menu guidance the electronicVED plus can easily be adjusted upon your desire. Whether the basic alignment of the appliance, temperature adjustment, children safety function, scalding protection or energy safety function: the menu makes it simple.

You can see how little it consumes: via energyMONITOR

Already when tapping warm water the actual power level and the flow volume is shown. With the energyMONITOR the electricity and water consumption can be indicated in m³ and kW for the passed 30 or 360 days. Not being an exact measurement device slight tolerances have to be considered - but this is anyway a precious trend indicator which enables you to estimate your yearly consumption.

Without having to wait: warm water on demand

Warm water at the desired temperature is always supplied by the electronicVED plus - up to the exact degrees centigrade. The micro processor in the electronicVED plus detects and regulates the needed heating power by means of the inlet temperature and the water flow. Thus it does never consume more than the really required energy while always assuring highest warm water comfort.

Product features electronicVED plus at one sight:

- Output models 18, 21, 24 and 27 kW
- EnergyMONITOR with consumption indication
- Big illuminated graphical display with plain text menu
- Electronic power adjustment
- Exact temperature adjustment from 20 up to 60°C
- Flat design: 481 x 240 x 99 mm (height / width / depth)
- Easy to service thanks to System Pro I
- Adaptable to solarsystem (except VED E 27/7 P) for pre-heated water up to 60°C
- Please kindly see technical details on page 8



Proper Performance for everyone:

electronicVED



The new generation of electric instantaneous water heaters is again a striking proof of Vaillant's leadership in innovation. Each appliance offers a vast variety of convenience features, all combined in a brand new design. Extremely comfortable in use and tailored to individual demands it combines economical hot water technology and durable quality „made in Germany“. At the same time the uniform and reliable product concept is the guarantor of an overall easy-to-operate, easy-to-install and easy-to-service appliance. Smoothed shaping and low appliance depth make the appliances easy to integrate in each and any home.

Simply comfortable: new electronicVED

Just as name indicates the electronicVED is electronically guided. The outlet temperature can be regulated stepless and stays constantly up to the performance limit. There-with oscillations in the water pressure are electronically balanced. Handling could not be easier: the desired water temperature is adjusted at the temperature selector and yet the electronicVED is ready - for flushing, washing, taking a bath or a shower or washing the teeth.

Product features electronicVED at one sight:

- electronicVED with electrical performance adjustment, stepless temperature regulation and output temperature stability up to the performance limit
- Flat design: 481 x 240 x 99 mm (height x width x depth)
- Installation system Pro I for maximum service and installation ease
- Please kindly see technical details on page 8

Simply good and reliable:

hydraulic VED

Proper output for everyone

The hydraulically adjusted VED is the proven and tested basic model in the range of Vaillant electric water heaters. It supplies tailored warm water comfort in flats and houses as well as in office buildings. The desired water temperature can comfortably be adjusted over the temperature selector. With small demands the VED reduces its power level by more than 50%. Four different power levels keep the energy consumption low.

Easy to install and maintain

All VED devices are supplied with an universal mounting board. Vaillant`s installation system Pro I cares for a fast and easy installation with little efforts. The integrated folding frame facilitates the access to the water connections; electrical connections can comfortably be fixed from the front side. The maintenance is as easy: all main components are just plugged in and could easily be replaced.



Product features VED at one sight:

- Output models 12, 18, 21, 24 and 27 kW
- Hydraulic regulation of water volume, four power levels
- Flat design: 481 x 240 x 99 mm (height / width / depth)
- Easy to install and service thanks to System Pro I
- Please kindly see technical details on page 8



Small, fast, economical:

Vaillant miniVED

Washing hands in the small bath room or in the office - the new Vaillant small electric water heater miniVED is the right choice. It is installed as quick as a flash where a cold water and a mains connection exist. The compact device can unobtrusively be put even under the smallest basin. And only after a few seconds warm water is flowing.

High comfort at low costs

Via different components as a water flow limiter the miniVED consumes significantly less water and energy than a small electric storage. The cost-efficient but comfortable decentral warm water supply does not require a high investment. And for a long term use of the appliance is anyway a good choice: thanks to durable, low maintenance technique in the well-proven Vaillant quality.

Product features miniVED at one sight:

- Three power levels: 3,5, 4,4 and 5,7 kW
- Water temperature rising of up to 25 K
- Tapping volume: 2,0 l/min up to 3,3 l/min
- Dimensions: 131 x 186 x 80 mm (height / width / depth)
- Low installation effort, fast mounting
- Please kindly see technical details on page 8



red dot

In fact it is a pity to hide it.
For its felicitous composition the new miniVED received the red dot design award 2010



Technical data Vaillant electric instantaneous water heaters

electronicVED exclusiv	unit	VED E 18/7 E	VED E 21/7 E	VED E 24/7 E	VED E 24/7 E
Nominal capacity	kW	18	21	24	27
Nominal voltage		400V / 50Hz / 3/PE ~			
Max. tapping quantity	l/min	10	12	14	16
Max. inlet temperature	°C	60	60	60	25
Temperature adjustment range	°C	20 - 60			
Dimensions: Height / Width / Depth	mm	481 / 240 / 99			
Weight	kg	4,4			

electronicVED plus	unit	VED E 18/7 P	VED E 21/7 P	VED E 24/7 P	VED E 27/7 P
Nominal capacity	kW	18	21	24	27
Nominal voltage		400V / 50Hz / 3/PE ~			
Max. tapping quantity	l/min	6	7	8	9
Max. inlet temperature	°C	60	60	60	25
Temperature adjustment range	°C	20 - 60			
Dimensions: Height / Width / Depth	mm	481 / 240 / 99			
Weight	kg	4,4			

electronicVED	unit	VED E 18/7	VED E 21/7	VED E 24/7	VED E 27/7
Nominal capacity	kW	18	21	24	27
Nominal voltage		400V / 50Hz / 3/PE ~			
Max. tapping quantity	l/min	7	7	7	9
Max. inlet temperature	°C	60	60	60	25
Temperature adjustment range	°C	20 - 60			
Dimensions: Height / Width / Depth	mm	481 / 240 / 99			
Weight	kg	4,4			

hydraulic VED (not suitable for plastic pipe systems)	unit	VED H 12/7	VED H 18/7	VED H 21/7	VED H 24/7	VED H 27/7
Nominal capacity	kW	12	18	21	24	27
Nominal voltage		400V / 50Hz / 3/PE ~				
Tapping flow for start						
Capacity selector step I and II partial load	l/min	2,7	3,8	4,4	5,1	5,7
Capacity selector step I and II full load	l/min	3,8	5,8	6,7	7,7	8,8
Max. inlet temperature	°C	25				
Output water temperature (at a water inlet temperature of 10 °C)						
Capacity selector step I partial load / full load	°C	30 - 40				
Capacity selector step II partial load / full load	°C	40 - 55				
Dimensions: Height / Width / Depth	mm	481 / 240 / 99				
Weight	kg	5,4				

miniVED	unit	VED H 3/1	VED H 4/1	VED H 6/1
Nominal capacity	kW	3,5	4,4	5,7
Nominal voltage		230V / 50Hz		
Max. tapping flow (at a water inlet temp. of 10 °C)	l/min	2,0	2,6	3,3
Max. inlet temperature	°C	20		
Water temp. rising	K	25		
Dimensions: Height / Width / Depth	mm	131 / 186 / 80		
Weight	kg	1,2		

Your local partner for Vaillant products:

Vaillant Group International GmbH

Berghäuser Str. 40 ■ Germany ■ 42859 Remscheid
 Phone: +49 2191 18 - 0 ■ Fax: +49 2191 18 - 3090
 info@vaillant-export.com ■ www.vaillant-export.com